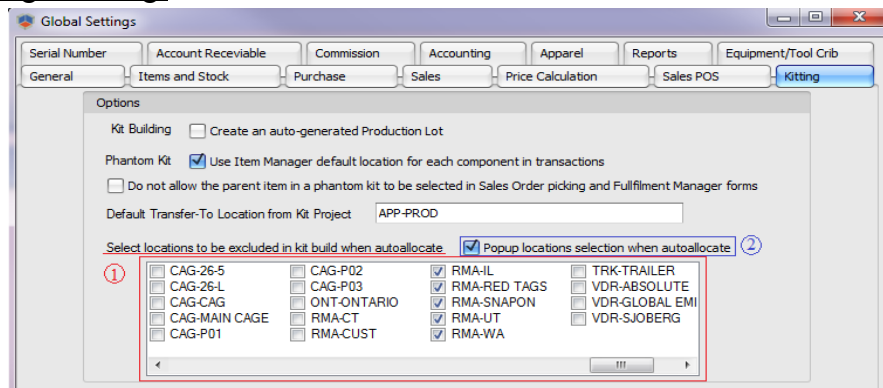


SIMMS changes per case#6814

I. Global Settings>Kitting:

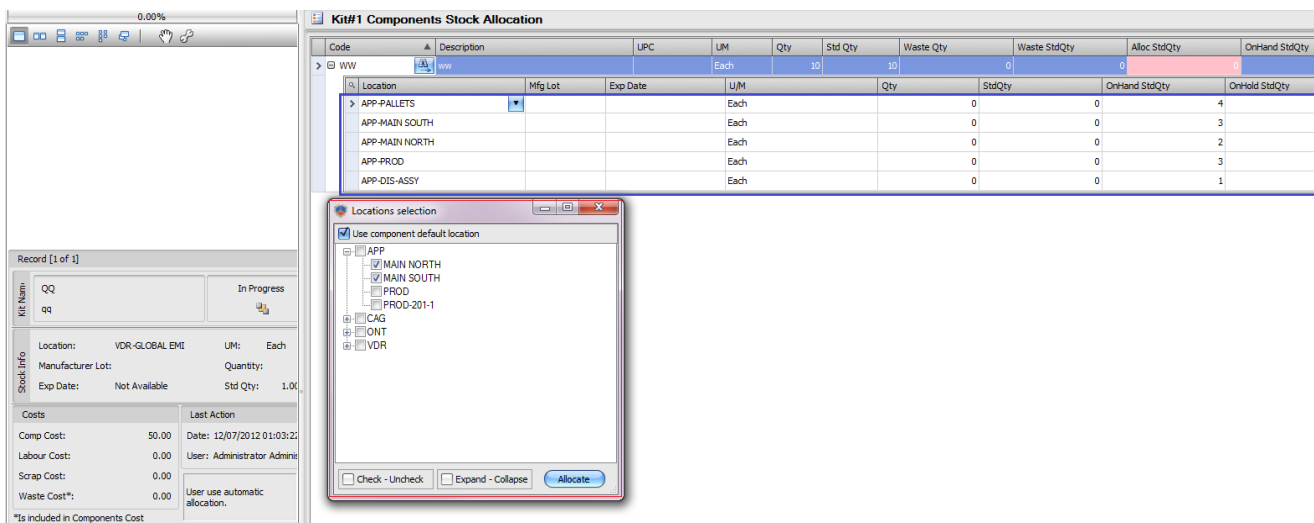


1 – From this list, admin can exclude specific location(s) from automatic allocation process;

2 – If this option is checked, when user use automatic allocation process, system will popup a window from where user can choose locations used for allocation – see point II. I added this option to leave existing customers ability working in the old way if they did not wish to use new feature.

II. Build Kits> Automatic Allocation process:

If “popup locations selection ...” is checked in Global Settings>Kitting, below window is open and show a tree with available warehouses and bin’s from where user can easy choose location(s).



Check box "Use component default location" on locations selection allow user ability to allocate first on default component location and then, if choose other locations from tree, system will continue allocate on that locations.

Using this tool, user can fill the stock in more sessions. I mean, on above image, user can choose in first session locations APP-MAIN-SOUTH and APP-MAIN NORTH and click allocate and later, can chose APP-PROD and APP-PALLETS and allocate. In other words, what was allocated in previous session(s) will stay allocated and system will allocate just remains qty's.

From above tree are excluded locations: no access per User Manager, locations excluded in Global Settings>Kitting by admin and inactive locations.

On the stock details (blue area) for a component, grid shows all available stock records, even if "user" has no access to specific locations (read-only). This prevent scenario when one user has access on location1 and assign qty's and second user has no access on location1. Showing all records, every user has a complete image of how qty's was allocated.

On the allocation process, system will follow your allocation rule per Global Settings>General>Selecting Manufacturer Lots per selected locations.